

Press release

22.10.2008

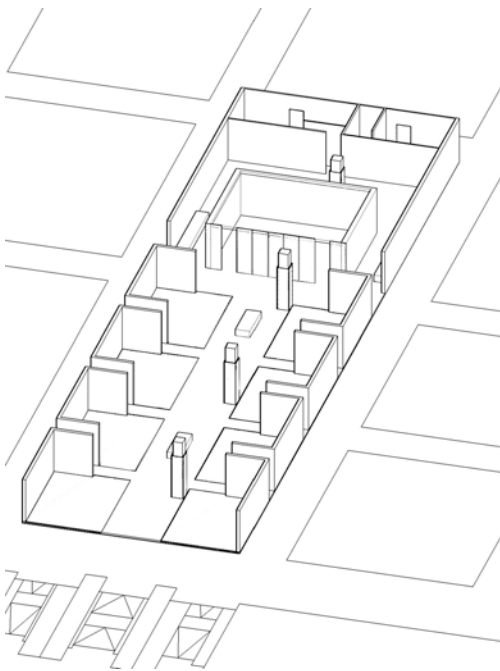
Wilkhahn at Orgatec 2008: design made in Germany – Pointing the way to Conference Excellence

On the theme of “Pointing the way”, Wilkhahn will be presenting numerous innovations for high-quality conference and communication environments besides its first-class office chair ranges: from new seating ranges, range additions and various table systems to a high-end conference room in which furniture, forms of interaction and state-of-the-art technologies are perfectly integrated.

The exhibition stand concept, which the wiege design studio developed for Wilkhahn, focuses on the following two fields of core competence:

- The design approach of the individual products that are characterized by sensual understatement, reduction to essentials, high quality and enduring functionality.
- The competence to provide solutions for furnishing different communication and conference environments in which interior design is adapted to human needs, communication processes and state-of-the-art technologies.

The 700 sqm exhibition stand is completely white and largely closed off on three sides with a view to providing an oasis of calm and concentration in the midst of the hustle and bustle of the fair. The interior is divided into open booths by means of partitioning structures. They are positioned along both sides of the longitudinal axis, each providing 30 sqm presentation areas for various scenarios. This combination of product presentation and utilization context allows various forms of communication and conferencing to be experienced hands-on, whereby



The exhibition stand concept, developed for Wilkhahn by design studio wiege, presents a series of scenarios arranged along the central axis but closed off to the outside. New products are shown in application contexts. Fig.: wiege

new products, which have their premiere at Orgatec, are of course integrated too.



Chassis multi-purpose chair range, design: Stefan Diez. Photo: Wilkhahn



Velas relaxation chair range, design: Eric Degenhardt. Photo: Wilkhahn

Atelier: with Stefan Diez, from a drawing to a prototype

In the "Atelier", the process will be demonstrated on the basis of collaboration with designer Stefan Diez. Taking Chassis, the new, ultra-light and stackable multi-purpose chair, as an example, insights into the interplay of concept idea, manufacturing innovations, quality in use and design will be shown using individual components, photographs from the design process, renderings, design samples and world-first prototypes – the latter fully functioning and ready for you to take a seat. Engineering and manufacturing technology are derived from automobile construction: the seat and back frames are produced by means of deep-drawing and three-dimensional forming of thin sheet steel in one piece. A resilient seat shell in core leather is inserted into this rigid, self-supporting structure. The result is a flexible, comfortable multi-purpose chair with soft lines, which is stackable and characterized by minimum material input, low weight and ecological advantages – as steel can be recycled in technical materials cycles without any quality loss.

Easy Lounge: fascinating minimalism

In the "Easy Lounge", Velas the new, graceful chair (design: Eric Degenhardt) presents its aesthetic and ergonomic calibre. The smooth lines of the leg frame and the covered seat frame are fascinating due to their subtle, organic minimalism – plus a high degree of seated comfort that is provided by an innovative, seamless and structured cover using shaped knitting technology. The range is completed by a footstool and a three-legged side table.

Variable Conference: when discussions and communal dining become interspersed

In the "Variable Conference" scenario, the Palette table range (design: Karlheinz Rubner) and Ceno, the new, stackable upholstered chair (design: Läufer + Keichel), show how easily conference environments can be transformed.

The upholstered four-legged chair combines the functionality of a stackable conference chair with the sensual qualities of a high-calibre dining chair. Carefully formulated details, high-quality materials,



Ceno upholstered chair, design: Läufer + Keichel. Photo: Wilkhahn

precise workmanship and ingeniously simple joints convey the very best in terms of industrial product design. The comfortable four-legged chair is available with or without armrests.

Dynamic Conference: space-saving and perfectly structured

“Dynamic Conference”, presenting the Confair range (design: wiege, Fritz Frenkler, Justus Kolberg) and the mobile foldable and pivotable Timetable range and the Confair folding table (each designed by Andreas Störiko), provides all the tools that are vital for self-organized, participation-oriented teamwork and multifunctional space utilization. The coherently high-quality design ensures that creativity can be combined with professionalism. Confair has thus become a global model of excellence for a completely new generation of furniture: the original Confair is also at home in top executives’ offices throughout the world – on request also available with perfectly integrated connectivity modules for multimedia conference technology.

Executive Office: coherent management culture

In the “Executive Office”, classic Modus swivel chairs (design: wiege, Klaus Franck, Werner Sauer), a Travis table and the new Gravis sideboard range (each designed by wiege) represent predictability in terms of style on the highest level. The Gravis sideboard range, with its calm and clear design, comprises “cores” enveloped by a “shell”. It is available in all Wilkhahn veneer finishes or with a back painted coloured glass surface to provide perfectly coherent solutions. The outer form may be understated, yet the operation and design of the storage elements is fascinating: a damped mechanism for opening and closing with finger pressure, drawers with self-closing runners, optionally with motor driven drawer extension, and a concealed, radio-wave locking system make the range convenient and impressive to use.



Gravis sideboard range, design wiege. Photo: Wilkhahn

Classic Conference: welcome to the club

A conference with a classic character is reflected by means of a high-quality table configuration (Logon range, design: Andreas Störiko) in combination with the Gravis sideboard range and Carus, the new upholstered chair. The distinctive design of the new, prestigious conference chair supports informal



Carus upholstered chair, design wiege. Photo: Wilkhahn.

contact opportunities in those areas where exclusiveness and high comfort factors are a prerequisite. The light frame, precision-crafted in rectangular tube, gracefully offers a counterpoint to the volume of the monoform cushion unit. The smooth contours of the upholstery element convey high quality and a sense of comfort that combines professionalism with intimacy. Carus is available in four model variations: with a medium-height and high backrest, each with or without armrests.

Collaborative Space: geographically apart and yet together

With the InterWall®, InteracTable® and InteracTable-Multitouch®, the “Collaborative Space” shows the integration of state-of-the-art media technologies into a furnishing setting for cooperative work, even of teams at different geographical locations. The solutions, developed in collaboration with the foresee™ subsidiary company, allow highly intuitive and live cooperation: networked with other locations via internet transmission, several teams can simultaneously move images and films, steer or exchange other data on the interactive table surfaces. Using a simple hand gesture, data can be enlarged, rotated or just “taken along”, for example by transferring them to one’s own mobile phone. The innovative manner of rendering and intuitive access to complex material facilitates mutual communication, improves results and is fascinating too. The room elements are therefore also highly suitable as a medium for live communication in consultation, presentation or sales environments.



The “Collaborative Space” allows interaction between a table and a wall display and also networking of teams at different geographical locations. Photo: Wilkhahn

Multimedia Conference: ranging from a presentation and a video connection to interaction

Functioning as a cross-bar, the “Multimedia Conference” space shields the various scenario areas from the catering zone. Using brief presentation cycles, the daily routine of a conference environment application is simulated which meets state-of-the-art technical standards. The space is furnished with Modus swivel chairs (design: wiege, Klaus Franck, Werner Sauer), a Travis table configuration with sophisticated equipment and a sideboard from the new Gravis range (each designed by wiege). The range of application spans lectures and videoconferences to interactive work – including automatic adaptation of light and sound technology

and integration of cutting edge technologies such as "e-paper" into the table configuration. The focus is on the aesthetic and prestigious quality of the furniture in which technical equipment is integrated in a concealed way. Operation is straightforward and simple in order to promote interaction among participants rather than impede it. The scenario thus provides inspiration as to how furniture and technology allow much more efficient and result-oriented utilization.

Alineria: relaxation between office and conference

Last but not least, the "Alineria" is the place for fostering contacts and intensifying info-exchange with exhibition guests. Completely furnished with models from the Aline range, including the new Aline bench unit (design: Andreas Störiko), the showcase also serves an exhibition function: small snacks and refreshments give guests an opportunity to relax and recharge their batteries. The graceful Aline bench, with an almost floating appearance, comprises two base elements connected with a supporting beam. Available in two widths, the supporting structure is fitted with three or five location points (depending on the width selected) for free configuration of seat units and side tables. The seats are not only striking on account of their unmistakable aesthetics, but they also provide a high degree of comfort due to high resilience and air permeability. Each width is available with or without armrests. To team with the side tables, with a thickness of just 12 millimetres, the bench is available in either black or white, each with a colour-matched membrane.



Aline bench unit, design: Andreas Störiko.
Photo: Wilkhahn

New ranges and models at a glance:

- Chassis multi-purpose chair, design: Stefan Diez
- Velas relaxation chair, design: Eric Degenhardt
- Ceno upholstered chair, design: Läufer + Keichel
- Carus conference chair, design: wiege
- Aline bench system, design: Andreas Störiko
- Gravis sideboard range, design: wiege

You can find Wilkhahn at Orgatec 2008 in Hall 10.2. Stand Q10/P11

Wilkhahn

Further details:

Wilkhahn
Wilkening + Hahne GmbH+Co.KG
International Communications
Burkhard Remmers
Fritz-Hahne-Straße 8
D-31848 Bad Münder
Tel. +49 5042 999 169
Fax +49 5042 999 130
Mobile +49 172 544 9975
burkhard.remmers@wilkhahn.de

mai public relations
Matthias Mai
Chausseestr. 8, Aufgang E
D-10115 Berlin
Tel. +49 30 8411 4808
Fax +49 30 8411 4807
Mobile +49 163 325 0099
mm@maipr.com